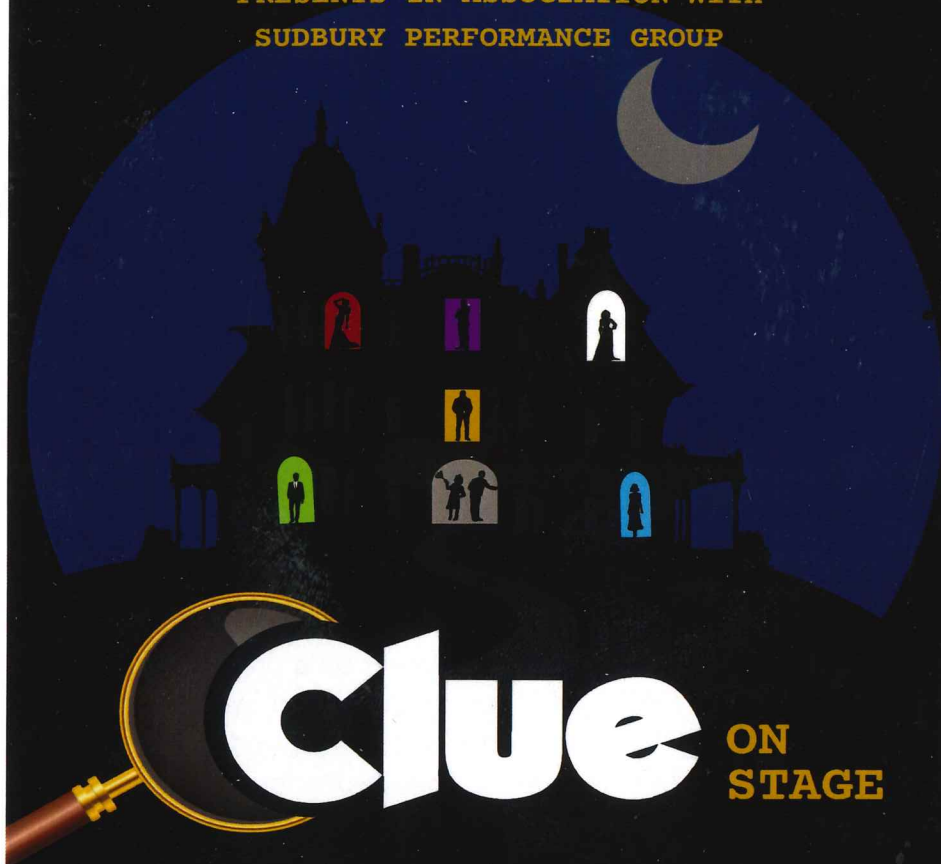


PLAYBILL

PORCHLIGHT THEATRE COMPANY
PRESENTS IN ASSOCIATION WITH
SUDBURY PERFORMANCE GROUP



Clue ON STAGE

BASED ON THE SCREENPLAY BY JONATHAN LYNN

WRITTEN BY SANDY RUSTIN

ADDITIONAL MATERIAL BY HUNTER FOSTER AND ERIC PRICE

BASED ON THE PARAMOUNT PICTURES MOTION PICTURE BASED ON THE HASBRO BOARD GAME CLUE ORIGINAL
MUSIC BY MICHAEL HOLLAND

THORNELOE UNIVERSITY
SEPTEMBER 18-20



BY SPECIAL ARRANGEMENT WITH THE ASSACA GROUP, MORE LIGHT PRODUCTIONS, AND MICHAEL
LARK/LIVELY SCENE ENTERTAINMENT CLUE IS REPRODUCED BY SPECIAL ARRANGEMENT WITH
BROADWAY LICENSING GLOBAL SERVICING THE DRAMATISTS PLAY SERVICE COLLECTION.
(WWW.DRAMATISTS.COM)

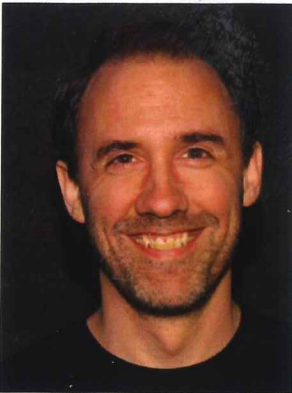


DIRECTOR'S NOTE

It has been one of my greatest joys to help bring to life this incredible show. So many volunteers helped in the creation of this little comedic gem. Porchlight Theatre Company has always stood for unwavering community connection and collaboration. Having such an outstanding crew backstage helping us was a strong driving force. I found directing this production to be a dance between our cast and crew with the mysterious story elements we weaved throughout helping to stitch together the whole choreographed narrative. We continue to welcome more volunteers into our ever-growing theatrical family. We hope you enjoy the show!! See you next time!

Philippe Poirier

President / 'Clue: On Stage' Director
Porchlight Theatre Company



PHILIPPE POIRIER – DIRECTOR

Mr. Poirier has been involved in theatre and film for years as a professional performer, acting coach, writer, director and producer. He received a bachelor's degree in Theatre Performance from Ryerson Theatre School. His directorial and acting experiences range from classical to contemporary. He's also the founder and President of Porchlight

Theatre Company, based in the Sudbury area. His theatre company will be launching its fifth season this fall, with the who-dun-it murder-mystery-farce *CLUE: On Stage*. I'm hoping you all enjoy the show and join us on stage soon!"

CAST & CREW

Keagen Durocher.....WADSWORTH
Renée Dumont Mitchell..... YVETTE
Heleene Lohan Cameron.....MISS SCARLET
Theresa Anderson-Butcher.....MRS. PEACOCK
Christina Carmichael.....MRS. WHITE
Ted Kellogg.....COLONEL MUSTARD
Scott Mitchell.....PROFESSOR PLUM
Adam Laurenti.....MR. GREEN
Stephanie Fisher.....COOK/BACKUP COP
Georgia Mitchell.....SINGING TELEGRAM GIRL
Jay Paul...MR. BODDY/MOTORIST/CHIEF OF POLICE
Tom Stewart.....NEWSCASTER (v.o.)/UNEXPECTED
COP/BACKUP COP
Philippe Poirier.....MCCARTHY (v.o.)

Director – Philippe Poirier

Stage Manager – Karen Shute

Assistant Director – Teresa Stott

Props Masters – Teresa Stott, Karen Shute, Theresa
Anderson-Butcher

Wardrobe/Millinery - Teresa Stott, Karen Shute, Theresa
Anderson-Butcher

Set Design - Philippe Poirier and Teresa Stott

Set Carpentry – Laurier Poirier and Philippe Poirier

Set Painters – Teresa Stott, Heleene Lohan Cameron, Libby
Michie, Faizan Khan

Lighting Technician – Travis Desjardins

Sound Technician – Sean Perras

Promotional Photography – Lindsay Victoria, Max Trainor,
Rebecca Alison

Poster Design – Kailin Kohls

Programs – Teresa Stott

Front of House Coordinator – Dorothy Boyer

*Show is 90 minutes in length with no intermissions.**

Show disclaimer: photosensitivity and flashing lights

CAST & CREW BIOS



TERESA STOTT
ASSISTANT DIRECTOR/PROPS
MASTER/WARDROBE

This is Teresa's first foray into the theatre world and a huge learning experience! She is grateful for the opportunity to learn from such an amazing group of people. Teresa thanks her parents for allowing her to raid their house for props and set pieces.



KAREN SHUTE
STAGE MANAGER/PROPS
MASTER/WARDROBE

Karen is delighted to be part of the production team for *CLUE on Stage*. She has been involved with Porchlight Theatre Company for the last 3 seasons, both on stage as Rebecca Nurse in *The Crucible* and backstage for *Angels in America*. Karen says it's been a pleasure working with Philippe Poirier and Teresa Stott to put this show together and collaborating with such a fun and talented cast. She would like to give special thanks to Theresa Anderson-Butcher and Teresa Stott for support with costumes, set and props. Karen thanks our patrons for their support. Enjoy the show!



**THERESA ANDERSON-
BUTCHER
PROPS
MASTER/WARDROBE/MRS.
PEACOCK**

Theresa thanks Porchlight Theatre Company for the opportunity shake her tail feathers in the wonderful role of Mrs. Peacock. This is Theresa's second production with PTC and

this time in a role that definitely offers her the opportunity to hone her skills as a comedic actor. Theresa is over the moon excited to be able to work with such a talented, dedicated and funny cast and crew. Regrettably, the bar cart is as dry as Theresa's sense of humour. Dang!



**KEAGEN DUROCHER
WADSWORTH**

Keagen is delighted to step into the shoes—and secrets—of Wadsworth in *Clue: On Stage*. Having previously conjured chaos as Reverend Parris (*The Crucible*) and wielded wit as Roy Cohn (*Angels in America*), he now relishes the role of the suspiciously charming butler.

Equal parts intrigue and improv, Keagen adores a good mystery and thrives amid theatrical misdirection. Whether guilty or merely well-dressed... he invites you to keep your eyes open, and your assumptions closed. Oh, and please, shoes off the furniture.



RENÉE DUMONT MITCHELL YVETTE

Renee Dumont Mitchell is serving champagne and side-eye as Yvette—the maid who knows more than she’s letting on (and isn’t above eavesdropping). Previous roles include Jacqueline in *Don’t Dress for Dinner* and Ruby-Sue in *Four Old Broads*. She’s

excited to be part of this sparkling whodunit and sends love to her family and friends for their support and inspiration.



HELEENE LOHAN CAMERON MISS SCARLET

Heleene has appeared in a variety of film/TV projects, and she has previously performed in the Sudbury Performance Group’s One Act Festivals and in YES/STC productions. She is so excited to be working again with director Philippe Poirier and Porchlight Theatre and to

perform with this incredible cast. Special kudos to Sean and all the sound/lighting/stage crews and to our indomitable Stage Manager Karen!



**CHRISTINA CARMICHAEL
MRS. WHITE**

Christina is delighted to debut with Porchlight Theatre Company as the mysteriously misunderstood Mrs. White in *Clue*. A familiar face at Theatre Cambrian and Sudbury Performance Group, she's thrilled to blend her love of comedy, murder (fictional, of course), and dramatic exits. With

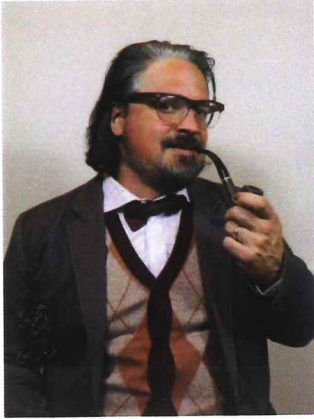
a cast this talented, who needs alibis? Christina promises laughter, mayhem, and possibly a suspicious candlestick.



**TED KELLOGG
COLONEL MUSTARD**

Teddy Kellogg is an actor of stage and screen. You may have seen him on tv in *Star Trek Strange Worlds*, *Murdoch Mysteries*, *Odd Squad* or in his many commercials over the years. On stage, he's played Lenny in Neil Simon's "Rumors", Chris/Inspector Carter in "The play that goes Wrong" and the Apothecary in "Romeo & Juliet".

Teddy has studied comedy and was a member of the illustrious Second City Conservatory program. Now a Sudbury resident, Teddy is excited to be a part of Porchlight Theatre and hopes to bring the laughs in this hilarious murder mystery!



**SCOTT MITCHELL
PROFESSOR PLUM**

Scott Mitchell is excited to return to the stage for Porchlight Theatre Company's production of *Clue*. He previously appeared as Dennis in *Rock of Ages* and served as the show's vocal director. A lifelong music educator and passionate performer, Scott brings both heart and humour to every role. He's

thrilled to be part of this talented cast and hopes you enjoy the mystery, mayhem, and laughs of *Clue*. Enjoy the show!



**ADAM LAURENTI
MR. GREEN**

Adam Laurenti is a new addition to Porchlight Theatre Company. Building on his experience with the Espanola Little Theatre, Adam brings a unique blend of expression and enthusiasm to his roles. His recent credits include two murder mystery dinner theatre shows, scripted and improvised,

written by Michael Erskin. He also recently performed the roles of Jeff in SPG's production of *Cooking for Love* and George in *Don't Dress for Dinner*. As Adam continues to refine his craft, he welcomes opportunities to collaborate and grow alongside fellow artists.



**STEPHANIE FISHER
COOK/BACKUP COP**

Stephanie is excited to be in her first Porchlight production! New to the theatre, Stephanie has just begun the second year of her performing arts journey and cannot wait to see what's next. Portraying "Ze Cook" is an exciting physical challenge that allows Stephanie to draw from

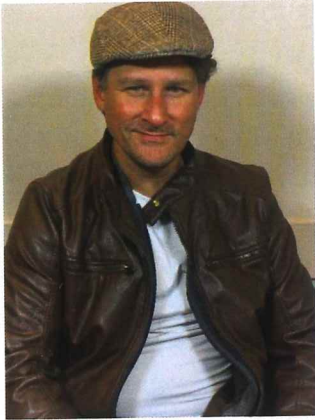
her love of all things macabre, including Lurch, Jason Voorhees, Jack Torrance and even Homer Simpson. There's even a little Weekend at Bernie's thrown in there! Stephanie wishes you a "killer" night at the theatre



**GEORGIA MITCHELL
SINGING TELEGRAM GIRL**

Georgia Mitchell is 11 years old and a Grade 7 student. She is thrilled to be making her Porchlight Theatre debut after spending her summer on stage in Jesus Christ Superstar. Georgia's past roles include Clarice in Rudolph and Lydia in Beetlejuice Jr. with Sudbury Performance

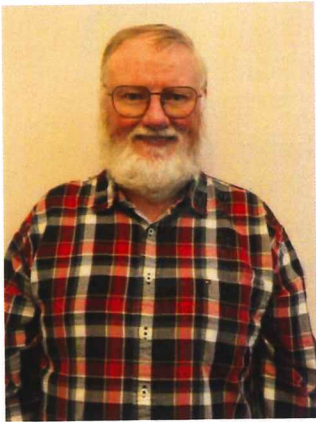
Group, and Oliver in Oliver! With YES Theatre. She is grateful to Porchlight Theatre for this opportunity, and she thanks her parents for their endless support and encouragement.



**JAY PAUL
MR. BODDY/MOTORIST/CHIEF
OF POLICE**

Jason Paul previously worked with Porchlight on *The Crucible* and *Opening Night*. Normally known for his works in film and television, he is grateful to dip his toes back into theatre when the right opportunity arises. After this production of *Clue* finishes it's

run, look for him on Season 5 of the popular Sudbury based television show, *Shoresy*.



**TOM STEWART
NEWSCASTER (v.o.)
/UNEXPECTED COP/BACKUP
COP**

This is Tom's 2nd performance with Porchlight. This show is a very funny and fast paced with lots of scene changing, The performers in this play brought passion and humour to their roles and I feel blessed to be on stage

with them. The production crew worked incredibly hard to bring this show to life, while the backstage crew had to be on their toes with so many set pieces to move so quickly. Lastly, Tom would like to thank his family for allowing him to continue to follow his passion. He wants to send a special message to his wife who is recovering from a very serious illness, Love you always and forever.

BACKSTAGE



ERIC MANGA

ANN HA



FAIZAN KHAN

ROWAN MONTGOMERY



ACKNOWLEDGEMENTS

OUR PARTNER

SUDBURY PERFORMANCE GROUP

OUR DONORS

Thank you to our beautiful donors who've assisted in bringing local performing arts to the community.

OUR RETAILER

SHOWPASS - For online ticket sales

ADVERTISING

Provided by JOURNAL PRINTING

